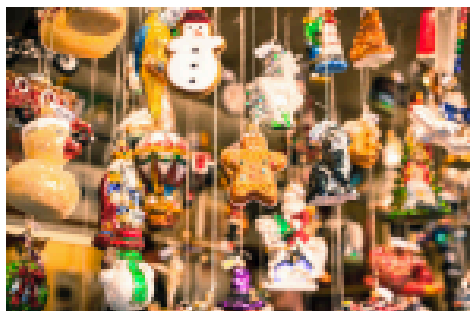




FESTIVE SEASON IN THE HEART OF GERMANY with 2 Nights in Prague
8 Day River Cruise Frankfurt to Prague

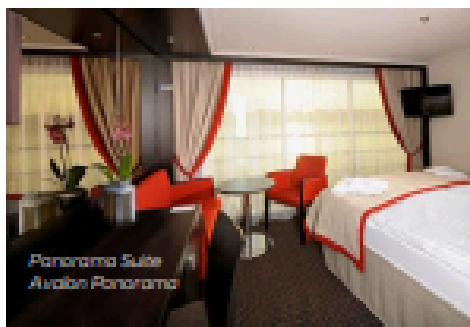
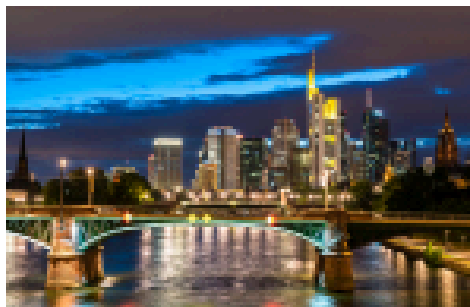
December 3 - December 10, 2025



CAT E \$3088pp | CAT D \$3,231pp | CAT B \$4,123pp | CAT A \$4,195pp | CAT P \$4,231pp

*Prices are based on Double Occupancy and include all taxes & port charges.
 *Travel insurance, extra nights, airport transfers and airfare are additional. Please inquire.
 *Prepaid Gratuities are included
 *Deposit amount is \$250 Per Person, non-refundable. Final Payment due on September 04, 2025.

In Frankfurt, board your Avalon Suite Ship®, festively decorated and beautifully dressed up in Christmas color, and embark on this Christmastime river cruise through the heart of Germany. Your European river cruise takes you behind medieval walls and towered gates to enjoy a guided walking tour in a picturesque village along the Main River. Celebrate the season in charming Würzburg, known as the "Pearl of the Romantic Road," and surrounded by sloping vineyards-covered hills. Visit the ornate Bishop's Residence—home to the largest ceiling fresco ever painted, then stroll through the Christmas markets while you sip Glühwein (hot mulled wine). Continue your Christmastime river cruise to Bamberg, a UNESCO World Heritage Site, where the many nativity scenes exhibited throughout the town are sure to delight. Take a guided tour of Nuremberg with free time to visit the Christmas market—one of the most famous in the world. Wander through Old Town illuminated with holiday lights and decorations, and be sure to sample some traditional lebkuchen (spicy gingerbread), a Nuremberg specialty. While on board, you'll also hear all about German Christmas traditions. Disembark your ship and travel to Prague, Czech Republic—a 1,200-year-old city preserved in time. Stand in front of the medieval Astronomical Clock, and browse the Christmas markets where rows of brightly decorated wooden huts sell Christmas tree ornaments, wooden toys, and Czech handicrafts. And you can't miss the beautifully decorated tree in Old Town! Historical treasures of Germany and magnificent Prague are perfectly paired with the sights, sounds, and scrumptious tastes of the joyous holiday season on this unforgettable European river cruise.



EMILY'S TRAVEL
 emily@emilystravelmn.com
 www.emilystravelmn.com





FESTIVE SEASON IN THE HEART OF GERMANY with 2 Nights in Prague

8 Day River Cruise Frankfurt to Prague

Day 1 FRANKFURT, GERMANY (EMBARKATION)

Welcome to Germany. Your Suite Ship® is Ready for Boarding. Evening/overnight cruise to Main River Village. (D)

DAY 2. MAIN RIVER VILLAGE

Take a Guided Tour of a picturesque village along the Main River. Afternoon/overnight cruise to Würzburg. (B,L,D)

DAY 3. WÜRZBURG

Take a Guided Sightseeing Tour of the "Pearl of the Romantic Road" with its Old Main Bridge, towering fortress, and baroque Bishop's Residence.

Visit the Käthe Wohlfahrt German Christmas museum—the world's most extensive collection of traditional German Christmas decorations. Evening/overnight cruise to Bamberg. (B,L,D)

DAY 4. BAMBERG

Enjoy an onboard Christmas Traditions Lecture while sailing. Join a Guided Sightseeing Tour of Bamberg—medieval home of Germany's Roman Empire dynasties. Stroll through dozens of Bamberg's nativity scenes—from miniature to life-size.

Evening/overnight cruise to Nuremberg. (B,L,D)

DAY 5. NUREMBERG

Choose a Guided Tour of Nuremberg's medieval architecture, gilded fountain, Gothic cathedral, and Kaiserburg Castle. Or join a Guided Tour of the historic Nuremberg Rally Grounds—used by the Third Reich. Overnight docking in Nuremberg. (B,L,D)

DAY 6. NUREMBERG (DISEMBARKATION)

Bid your crew farewell and head for the Golden City of Prague. Stroll through the exquisite streets of the city and spend a free evening in one of Prague's cafés for dinner and Czech Beer. (B)

Day 7 PRAGUE

Gothic Cathedrals, Grand Castles and Great Cuisine
CLASSIC Take a Guided City Walk to visit Hradčany Castle Grounds; see St. Vitus Cathedral and Old Town's Astronomical Clock. Spend the afternoon on your own to browse the exquisite Christmas Markets of Prague. Stroll through the brightly colored wooden stalls for ornaments and handmade toys and handcrafts.

Day 8 PRAGUE

Your vacation ends with breakfast this morning.

AVALON PANORAMA DECK PLAN

SKY DECK



ROYAL DECK



SAPPHIRE DECK



INDIGO DECK



DECK PLAN

- | | | |
|-------------------------|----------------------|----------------|
| 1 Sky Lounge | 7 Observation Lounge | 15 Lobby |
| 2 Navigation Bridge | 8 Restaurant/Bistro | 16 Stateroom |
| 3 Sky Deck | 9 Restaurant/Cafe | 17 Club Lounge |
| 4 Midship | 10 Bar | 18 Suite |
| 5 Restaurant Lounge | 11 Stateroom | 19 Dining Room |
| 6 Open Deck/Deck Lounge | 12 Administration | 20 Promenade |
| 8 Open Deck Area | | |

CATEGORIES

- Royal Suite** Royal Deck | Royal Suite
- Cat. P** Royal Deck | Promenade/Bistro
- Cat. A** Sapphire Deck (Forward) | Promenade/Bistro
- Cat. B** Sapphire Deck (Aft) | Observation/Bistro
- Cat. C** Indigo Deck (Aft) | Deluxe Stateroom
- Cat. D** Indigo Deck (Forward) | Deluxe Stateroom



EMILY'S TRAVEL

emily@emilystravelmn.com
 www.emilystravelmn.com

